

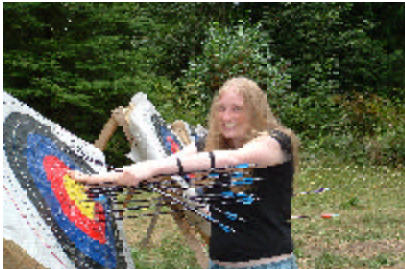
Activity Options at Sealth

*"...canoeing and exploring the beach were highlights of our trip."
- Jennie*

A day at Sealth is a day like no other! Whether you're here for environmental education, a youth leadership experience or for a retreat or conference, opportunities abound for exciting, challenging, or simply relaxing programs for your group. We can provide experienced, qualified staff to help you with your programs, or you can provide your own staff and take the lead yourself.

Teambuilding activities

Many groups use Sealth as place to come together and grow as a team. Adults and older youth can experience training activities in communication, group dynamics, and teamwork on our 15-element Challenge Course. Similar activities, suitable for ages 10 and up, are "portable" and can take place outside or indoors; our certified staff (or yours) can lead.



Archery, sports and games

Three large playfields are excellent for soccer, baseball, capture-the-flag, marching band practice, and more. Volleyball nets are available in both main camp and Wrangler; a beautiful sand court in main camp attracts pros and novices alike. We can provide some basic sports equipment, such as balls, bats, and frisbees. Two archery ranges, both with covered shooting lines, are available year-around.

Seasonal waterfront

Go boating and swimming in Puget Sound! From April to October, our waterfront activity area offers row boating, fishing, and swimming for all ages, plus canoeing and "funyaks" (sit-on-top kayaks) for those able to and large enough to paddle. Certified lifeguards are required.

Explore the woods

Hike the many miles of trails, or stop to gaze at a towering evergreen. Go exploring in the wetlands, watch the wildlife, or marvel at a gorgeous sunset. Whatever your goal, Sealth's beautiful natural setting is a wonderful place for relaxation or education.

Wander the beach

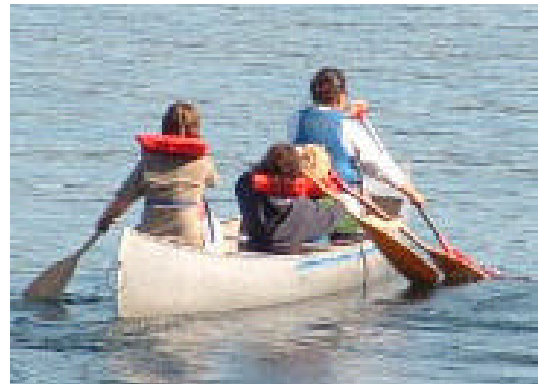
A mile and a half of beachfront on Vashon Island's western side makes it an ideal home for both marine critters and curious humans alike. Discover sea urchins, be squirted by a geoduck, explore an eelgrass bed or watch the fish dart through the phosphorescent water. The wonders of Puget Sound are a just few steps from your door!

Amphitheaters, fire rings, and fireplaces

Spend an evening by the fire roasting marshmallows, sharing songs or stories, or simply basking in the warmth of the embers. Most program rooms have fireplaces, and fire rings are scattered throughout camp. Two large outdoor amphitheaters, one by the beach and one secluded in the woods, offer beautiful outdoor program settings.

Outdoor living skills

Build fires and shelters, cook outdoors and learn minimum impact camping. Tent camping is available at several sites, some with water and rustic shelters. Two mapped orienteering courses teach basic compass work on our trails and playfields. Learn advanced skills by going cross-country on Sealth's 400 acres.



Activities must be conducted in accordance with American Camp Association and Camp Sealth safety standards including certified personnel, approved equipment and operating guidelines. Please talk with us about program ideas and details.

Program and Activities

Archery, the challenge course, and waterfront activities require qualified leaders and instructors. You may hire our certified staff. Contact the Rental Coordinator at 206 463 3174 ext. 36 to discuss requirements.

Program staff

Our experienced and talented staff can help you with planning and implementing your program ideas at camp. Sports, outdoor skills, nature, photography, singing, day and night hikes, games - they do it all!
\$20/hour per program staff member

Teambuilding: challenge course

Required course fee (all groups):
Central Puget Sd. Council: \$100/day
Other organizations: \$140/day
When we provide a facilitator:
Course fee + \$20/hour per facilitator

Teambuilding: "portable" challenge

Initiatives and teambuilding activities that go anywhere and don't require the challenge course.
\$20/hour per facilitator

Archery and Waterfront:

\$20/hour per instructor. Waterfront requires 2 staff minimum.

Contact us:

Camp Sealth
14500 S.W. Camp Sealth Rd.
Vashon Island, WA 98070
206 463 3174, ext. 36
campsealth@campfire-usa.org



Sealth Rates

Rates for January 1, 2009 through December 31, 2009

Lodging Fees per person per night - 25 person minimum

	Camp Fire Members	Youth Organizations	Adult Groups
All Cabins	\$11.00	\$13.00	\$18.00
Wrangler Unit w/o food service	\$18.00	\$20.00	\$30.00
Day Use	\$3.00	\$4.00	\$8.00

Program & Meeting Rooms

Fees are for a 24-hour period:

Rounds Hall	
If we provide food service.....	complimentary
Without food service	\$220
Misty Mtn Lodge or Lower Shutanka	\$35
PW Lodge, Klwanis Lodge	\$60
Holiday House, Wohelo	\$20
Bird Cage	\$50
Wrangler: Parsons Lodge	
If we provide food service.....	complimentary
If you do your own meals	\$150

Food Service

There are minimums of 2 meals & 25 people for food service. Snacks, special items or deluxe meals can be arranged with our Rental Manager at 206-463-3174 ext. 21.

Coffee service is included with all meals.

Breakfast or brunch	\$9.75/person
Lunch	\$10.75/person
Dinner	\$12.00/person
Sack Lunch.....	\$8.00/person
Coffee service (for groups not buying meals)	\$4/person

Facilities for you to do your own cooking

Wrangler's "Parsons Lodge" is the **only** full kitchen with cooking/ serving equipment available for rent. Several of the program rooms have kitchenettes for **snacks**. You'll need to bring *all* your own food, utensils, coffee pots, dish towels, etc. for these spaces. Most of these kitchenettes have a refrigerator, sink, and electric stove. Outdoor fire rings and covered shelters with fireplaces are scattered throughout camp; firewood is provided.