

## Contents

All-Leader Meeting .....	1
Group Camping .....	2
Cooking and Cabins Training .....	3
Help Wanted .....	3
Ice Cream Social .....	3
Spring Projects/Field Trips .....	4

## Calendar

2 .....	Carnival of Beads @ ..... Camp Sealth
13 ...	Arbor Day
15 ...	National Art Projects Due
16-17	Service Weekend @ Camp ..... Sealth
16-17	Work Party @ Camp Niwana
18 ...	All-Leader Meeting
20 ...	CGPC Meeting @ SBO
23 ...	Cooking and Cabins Training
25-26	National Art Projects on ..... Display/ Judging @ Council ..... Office
29 ...	Simple Science @ Pacific ..... Science Center

## North Branch All-Leader Meeting

### Extreme Traditions: Camp Fire USA Edition

#### Why do we do that?

Come enjoy the latest All-Leader Meeting at the NBO on Monday April, 18<sup>th</sup> from 7 to 8:30 p.m. Learn about many of our Camp Fire traditions and the history behind them, including songs, names and symbolgrams, ceremonials and ceremonial attire. Share your groups' and Leaders' Association traditions, and pick up some new ideas for your own ceremonials and Council Fires.

This evening will also provide an opportunity to meet with other volunteers in the Branch at the same program level to discuss common concerns. Because this meeting will be "in place of" your regular monthly Leaders' Meeting, individual Associations are encouraged to stay and meet between 8:30 and 9 p.m.



**MARK  
THIS  
DATE**

As always, the Branch Group Program Committee is anxious to get your feedback and hear your ideas about what you'd like to learn, share, or experience at these All-Leaders' Meetings. If Camp Fire traditions are your passion, or just something you'd like to share with others, please contact Robin at 206 461 8550, ext. 310 or [robin-m@campfire-usa.org](mailto:robin-m@campfire-usa.org) to volunteer to help with this event.

## Earth Day at Carkeek Park

Since its inception in 1970, Earth Day has been a day to focus on our environment and how we as citizens can preserve and protect this big blue marble we call home. On Saturday, April 23<sup>rd</sup>, come join the 25<sup>th</sup> Annual Earth Day Event at Carkeek Park between 9 a.m. and 1 p.m.

This year's theme is "Salmon Friendly Neighbors Help Salmon Leap into the Future," and activities will include storm drain stenciling, litter removal, and distribution of information about how to be salmon friendly neighbors.

For Starflight groups working on the Wise Old Willy project, any of these activities meets the "Red Feather" action requirement. For Adventure groups, in addition to beads earned by completing the various activities, participating in the Earth Day celebration fulfills the "outdoor or camping activity" requirement for Trailseeker, Woodgatherer, or Firemaker projects.

For more information or to register for this Earth Day clean-up of Carkeek Park, call Nancy Malmgren at 206 363 4116.



# GROUP CAMPING - 2005

**When:** May 14-15, 2005

**Where:** Camp Sealth

**Cost:** Heated Cabin Participants: \$11 per person  
Tent Campers: \$5.50 per person  
(fee includes: program costs, day activities and crafts supplies)

**Bring:** Your own food and supplies for cooking outdoors, sleeping bag, and gear.

Come and enjoy a weekend of outdoor fun. Enjoy the many wonders that Camp Sealth has to offer: fresh air, a great beach, and the fun program planned by camp staff. There will also be a fun craft for you to do with your group, and don't forget singing around the campfire! One adult in each group must have completed Field Trip Training and Cooking and Cabins Training. At least two adults must attend with every ten youth.

**Activities:** Fun and exciting activities to be announced soon!

**Registration Deadline:** April 25, 2005 Register early, cabins fill up fast.

**To Register:** Complete registration form below and send with check payable to **Camp Fire USA**, plus a **self addressed stamped legal size envelope to:**

Carrie Cornforth  
8511 15<sup>th</sup> Ave. NE  
Seattle, WA 98115

A confirmation letter including directions, cabin assignments, clothing and supply requirements will be mailed after April 31<sup>st</sup>.  
**(Cancelled reservations cannot be refunded.)**

**QUESTIONS:** Call Carrie Cornforth at 206 461 8550, ext. 232 or e-mail [carrie-c@campfire-usa.org](mailto:carrie-c@campfire-usa.org).

---

## GROUP CAMPING - 2005

Group Coordinator's Name \_\_\_\_\_ Phone \_\_\_\_\_

Address \_\_\_\_\_ City \_\_\_\_\_ ZIP \_\_\_\_\_

Number attending: Girls \_\_\_\_\_ Boys \_\_\_\_\_ Women \_\_\_\_\_ Men \_\_\_\_\_ Grade level of youth \_\_\_\_\_

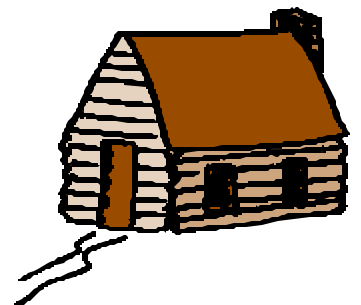
Are there any medical concerns we should be aware of? \_\_\_\_\_

Name of adult(s) with Field Trip training and Cooking/Cabins training \_\_\_\_\_

Registration Fee: Number of heated cabin campers \_\_\_\_\_ x \$10 = \_\_\_\_\_

Number of tent campers \_\_\_\_\_ x \$5.50 = \_\_\_\_\_

Total amount enclosed \$ \_\_\_\_\_



## Cooking and Cabins Training

Planning to go camping or cook over a fire with your Camp Fire group this spring or summer? When sleeping in a cabin or cooking over a fire, at least one adult accompanying each group must have completed Cooking and Cabins Training.

Cooking and Cabins Training will be offered in Kent on Saturday, April 23<sup>rd</sup>, from 9:30 to 3:30 p.m. Cost is \$5 to cover the food. A map to our training location will be mailed upon registration. The training will be held east of Kent near Lake Meridian. Registration is due on or before April 14<sup>th</sup>, 2005.

Call the South Branch Office at 253 854 3676 with questions.

## 120+ Sellers Ice Cream Social

Did you catch a super chocolate wave this year? Youth who sold 120 or more units of Camp Fire candy should watch their mailbox for their invitation to surf on in to the North Branch Ice Cream Luau to be held at the North Branch office on Thursday, April 28<sup>th</sup>, 2005.

If you or your group would like to help with this tropical night, please contact Robin at 206 461 8550, ext. 310 or [robin-m@campfire-usa.org](mailto:robin-m@campfire-usa.org).



## Help Wanted

Must love to have fun with children. Highly developed sense of humor required and good organizational skills a must. Must enjoy being called by a goofy name and eating very soft ice cream and s'mores.

Several highly rewarding positions are available: **Site Director** for Woodland Park (July 25<sup>th</sup> to July 29<sup>th</sup>) Day Camp. **Counselor, Junior Staff, and Specialist** positions are also available. For more information or to apply for Woodland Park, contact Robin at 206 461 8550, ext. 310, [robin-m@campfire-usa.org](mailto:robin-m@campfire-usa.org), or Carrie at ext. 232 or [carrie-c@campfire-usa.org](mailto:carrie-c@campfire-usa.org).

For information about other North Branch day camps, contact North Branch staff.



## Reminder to Wohelo Award Candidates

Wohelo Presentations for the North Branch Advisory Board is on April 27<sup>th</sup> at the North Branch office. If you are planning on earning your Wohelo Award in 2005, please contact Carrie immediately to set up a

Wohelo Award Advisory appointment before April 27<sup>th</sup>. You cannot earn this award unless Carrie has seen your documentation, proof of your work and has made the recommendation to the Wohelo Award Committee that you are worthy of earning the award.

Contact Carrie at 206 461 8550, ext. 232 or [carrie-c@campfire-usa.org](mailto:carrie-c@campfire-usa.org).



## H.I.P. Discovery

No April HIP Discovery (Carrie is out of town.)

Save the Date!

May 6, 2005- Cinco De Mayo Activity and Food Night (One day later!)

## April Leaders' Meetings

All Leaders' Association meetings are April 18<sup>th</sup>, at 7 p.m. at the Camp Fire Office. Please join other North Branch leaders at the All Leader Meeting; we will be exploring Camp Fire traditions, and provide time to meet with other volunteers who work with the same program level. Leaders' Associations can then meet between 8:30 and 9 p.m.

See the North Branch All-Leader Meeting article on the front page of the *North Branch News* for more information regarding this gathering. Questions? Contact Robin at 206 461 8550, ext. 310 or [robin-m@campfire-usa.org](mailto:robin-m@campfire-usa.org).

## Absolutely Incredible Kids at Seattle Betsuin Buddhist Church

As noted in the March *Wohelo*, the Adventure group at Seattle Betsuin collected 425 pounds of food for Northwest Harvest's 9<sup>th</sup> Annual "Kids For Cans" food drive. This was more per youth than any other group participating, not just among the groups in the congregation. They also packaged and sorted 750 pounds of candy at the Northwest Harvest warehouse, which was then distributed to 375 families.

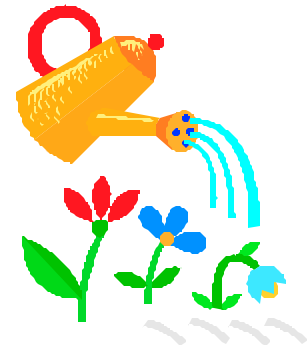
Northwest Harvest's website describes the project's goal this way: "Local schoolchildren learn to share by collecting non-perishable food at their schools, daycares and clubs."

Again, congratulations to the Absolutely Incredible Kids of the Adventure group at the Buddhist Church!

## Spring Projects/ Field Trips

A field trip can be a fresh learning experience for your group. With a new group, start out with short, local destinations. Explore your neighborhood. Find out what businesses or services are in your area. A young group can start with the library. Discover the many activities the library offers and apply for their first library cards.

With spring just around the corner, now is the time to start thinking about planting flowers. Adopting a park, school yard, a nursing home, church, or even an elderly neighbor's yard is a great service project. Take a field trip to a local nursery to see what is available for spring planting. This project can also include learning about the cost of plants, whether annuals or perennials are the better buy, finding out what plants do well in our area, and where to plant them. Maybe one of the group's parents is an avid gardener and would be an adviser for the project. This is an activity that will bring color and smiles to everyone as the flowers bloom.



**Camp Fire USA**  
CENTRAL PUGET SOUND COUNCIL  
8511 15th Avenue N.E.  
Seattle, WA 98115

NON-PROFIT ORG.  
U.S. POSTAGE  
PAID  
Permit No. 642  
SEATTLE, WASH