

Contents

Welcome New Leaders.....	1
Join B.G.P.C.	1
East Branch Artists	2
Christmas Ship	2

Calendar

November

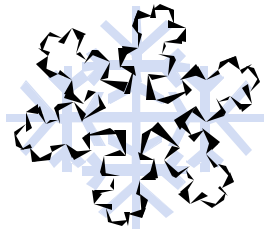
- 5 Groundbreaking @ Camp
..... Sealth
- 11 ... Veterans Day, Office and
..... Program Resource Center
..... Closed
- 20-21 Older Youth Weekend @
..... Camp Sealth
- 25-26 Thanksgiving Holiday,
..... Office and Program
..... Resource Center Closed
- 29 ... Early Bird Skating Party

December

- 10 ... Dental Bookmark Deadline
- 11 ... Teens in Action Caroling
..... for Cans
- 23-24 Christmas Holiday - Office
..... and Program Resource
..... Center Closed
- 26 ... Seahawks Blue Ribbon
..... Partnership Fundraiser
..... Game

Welcome New Groups!

Pam Zakula and Beth Peterson
Kindergarten boys and girls Starflight group
John Muir Elementary in Kirkland



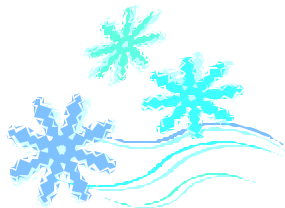
Michelle Spring and Parents
Kindergarten girls and boys Starflight Group
Mt. Si Montessori School and surrounding North Bend area

Be a B.G.P.C. Member

Get in on the fun! Working together is what makes Camp Fire an exciting experience. Be an East Branch Group Program Committee (B.G.P.C.) member! We are actively recruiting leaders from Bothell, Kirkland, Kenmore, Woodinville and Issaquah. No prior experience is required.



The B.G.P.C. is looking for volunteers who want to keep Camp Fire growing on the Eastside. Being a B.G.P.C. member is an interesting and rewarding experience. You will help with the overall planning and direction of the programs offered by the East Branch. You will meet new friends, polish your leadership skills, plan and schedule branch events, invite guest speakers and plan ways to increase membership.

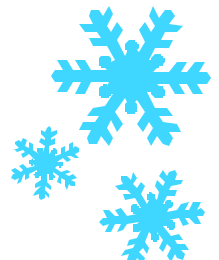


If you have questions, please e-mail Cindy Scott, B.G.P.C. Chair at cscott@hrcorp.net or contact Lynda Llavore, East/North Regional Director at 425 885 0477.

Caroling For Cans

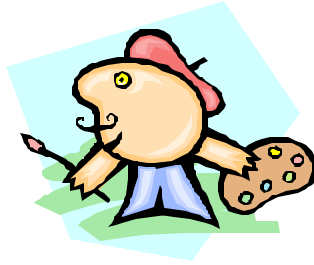
Calling all East Branch youth and families! To help organizations like Hopelink and other local food banks feed families who need help, the East Branch invites you to come caroling with Teens in Action for food bank donations on November 11th.

We hope you can help out in this very important community service event. Join us in the singing, get in the holiday mood, and help make others' holidays more merry.



East Branch Artists

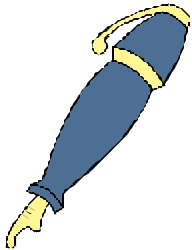
The East Branch sent many entries to the Puyallup Fair this year; some members entering in multiple categories. Here is the list of this year's entrants: Kaylyn Davis, Maddie Hayes, Sarah Taylor, Rachel Mickey, Marcy Mickey, Michelle Mickey, Reesa Anderson, Katie Scott, and the Millennium Bugs Group.



Their entry categories were wide-ranging: lanyard creations, pottery bowls, handmade purses, wooden birdhouses, hand-dipped candles, heart-shaped soap, memory frame, oil paintings, blanket stitched fleece, beaded necklace, hand-stamped and painted towel, and tie-dyed pillowcase. Almost everyone received a first or second place ribbon. Congratulations!

If this makes you want to enter next year, remember that just about anything you create in your Camp Fire group will qualify in some category. It's so much fun to see your handiwork on display and, of course, to come home with a ribbon.

Calling all Camp Fire Authors!



The East Branch pages of the *Wohelo* newsletter need you! We need articles from our volunteers and parents to make our section interesting and more informative for all of us to read! Groups and volunteers can write about projects they've done, rare and delicious recipes, or future outings/activities that your group would like to invite other groups to join. Just keep in mind that the articles are turned in, formatted and edited approximately one month before they are sent out to families to read.

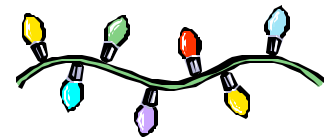
This is also a chance for your group to earn a special emblem for writing for the East Branch Pages: the Purple Plume award is back! Write an article for the *Wohelo*, and you or your group earns the emblem. We look forward to reading your creations!

Daring Explorers Goes Elementary!

Daring Explorers is an extra-curricular program created for Discovery age kids to interact with nature in a very daring way! Daring Explorer Leaders, Robert and Darlene Connor, are interested in leading specially planned trips for younger groups in the future.

Does your Starflight group love sledding in the snow, or hiking up the hills around the neighborhood? Are you looking for an exercise to introduce your younger group to the great outdoors?

Whatever the occasion, Daring Explorers is interested in making it happen for your younger group. Please call us at the East Branch office for more information, or e-mail Robert Connor at Robert@jedd.com.



The Christmas Ship is Coming!

Come celebrate the Holiday Season with this Seattle tradition. Come with your Camp Fire group or family and join with the community at many locations around the Eastside to enjoy festive carols, a bonfire, and hot cider!. Go to www.argosycruises.com/themecruises/xmasSchedule.cfm for more information.



Camp Fire USA
CENTRAL PUDGET SOUND COUNCIL
8511 15th Avenue N.E.
Seattle, WA 98115

NON-PROFIT ORG.
U.S. POSTAGE
PAID
Permit No. 642
SEATTLE, WASH